

# Axxcelera Broadband Wireless Product & Solutions Line Card

## AB-MAX Access Point



### Key Features

- WiMAX Compliant, NLOS, Point-to-Multipoint system
- FCC and CE approved for U-NII and ISM bands
- Supports 5.47 - 5.85 GHz operation on a single platform
- QoS Support (CIR, PIR)
- Programmable dual-pol. Access Point antennas
- Dynamic Frequency Selection (DFS)
- Integrated GPS for TDD synchronization
- Up to 40 mbps throughput

### Benefits

- Improved cell penetration and range
- Improved cell throughput (Up to 64QAM modulation)
- Different SLAs for different end users

### Applications

- Wireless ISPs
- Public Safety
- Cyber Cafes
- Rural Broadband
- Transportation
- Enterprise Networks

## AB-MAX CPE



### Key Features

- WiMAX-2004 Compliant - NLOS operation
- Fully integrated, easy to install, outdoor CPE
- Supports multi-band, TDD operation
- Comprehensive Quality of Service (CIR, PIR, Priority) and VLAN support
- Dynamic Frequency Selection (DFS)

### Benefits

- Maximizes revenues (multi-service, differentiated SLAs)
- Easy and quick to install
- Robust, field proven platform

### Applications

- Data applications (High speed Internet access, VPN, VLAN, Video Conferencing)
- VoIP applications (SIP, CAC)
- Video Surveillance

## AB-Full Access II



### Key Features

- Aggregate rate over 210 Mbps
- Highest system gain
- Scalable and spectrally efficient
- ISM 5.8 GHz Unlicensed Band
- Adaptive power control
- 1 + 1, 2 + 0 redundancy
- Integrated 2, 8, or 16 E1/T1

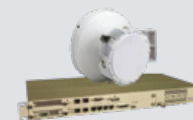
### Benefits

- No monthly leased line fees means quick payback
- Easily deployed and activated
- Ring architecture minimizes interruptions

### Applications

- Connect Buildings, Campuses, etc.
- Backhaul/Extend IP Networks, SANs
- Utility Monitoring, Control, Data Network Aggregation
- Enterprise
- Cyber Cafes

## ExcelFlex



### Key Features

- Compact, Split Mount Architecture
- Scalable and Spectrally Efficient
- Supports 6 - 38 GHz
- Flexible and Integrated Management
- Aggregate Rate to 310 Mbps
- Adaptive Power Control

### Benefits

- Network Option Cards for Easy Upgrade and Expansion
- Easily Deployed and Activated
- Ring Architecture Minimizes Interruptions
- Minimizes CAPEX

### Applications

- WiMAX and Cellular Backhaul
- Trunking Networks
- Last mile access
- Extension ring, linear and mesh

## ExcelMAX Access Point



### Key Features

- WiMAX Compliant (802.16-2004)
- Robust NLOS operation in 3.3-3.8GHz bands
- FCC approved for 3.65GHz operation
- Supports Full Duplex FDD, Half Duplex FDD or TDD operation
- Comprehensive Quality of Service (CIR, PIR, Priority) and VLAN support
- Integrated GPS for TDD synchronization

### Benefits

- Maximizes revenues (high spectral efficiency with aggressive re-use)
- Minimizes CAPEX (low cost, easy to deploy)
- Robust, field proven platform

### Applications

- Data applications (High speed Internet access, VPN, VLAN, Video Conferencing)
- VoIP applications (SIP, CAC)
- Video Broadcast (IGMP)

## ExcelMAX Full Duplex CPE



### Key Features

- WiMAX-2004 Compliant - NLOS operation
- Enhanced NLOS Features: Uplink Sub-channelization
- Fully integrated, easy to install, outdoor unit
- Full Duplex FDD support
- Comprehensive Quality of Service (CIR, PIR, Priority) and VLAN support

### Benefits

- Unmatched CPE capacity and Low Latency
- Maximizes revenues (multi-service, differentiated SLAs)
- Full Duplex CPE supports Carrier Class voice and Triple Play services
- Easy and quick to install
- Robust, field proven platform

### Applications

- Data applications (High speed Internet access, VPN, VLAN, Video Conferencing)
- VoIP applications ((30 POTS lines per CPE, SIP, CAC)
- Video Broadcast (IGMP)

## ExcelMAX Half Duplex CPE



### Key Features

- WiMAX-2004 Compliant (802.16-2004)
- Robust NLOS operation in 3.3-3.8GHz bands
- FCC approved for 3.65GHz operation
- Half Duplex FDD or TDD support
- Fully integrated, easy to install, outdoor CPE
- Comprehensive Quality of Service (CIR, PIR, Priority) and VLAN support

### Benefits

- Maximizes revenues (multi-service, differentiated SLAs)
- Fully integrated and easy to install
- Robust, field proven platform

### Applications

- Data applications (High speed Internet access, VPN, VLAN, Video Conferencing)
- VoIP applications (SIP, CAC)

## ExcelMAX Indoor CPE



### Key Features

- WiMAX-2004 Compliant
- Uplink sub-channelization improves NLOS performance
- Self Install, Self Configure Indoor CPE
- Half-Duplex FDD and TDD support
- FCC approved for 3.65GHz operation
- Comprehensive Quality of Service (CIR, PIR, Priority) and VLAN support

### Benefits

- Low cost CPE allows mass residential rollout
- Self Install feature avoids cost of professional installation
- Robust, field proven platform

### Applications

- Data applications (High speed Internet access, VPN, VLAN, Video Conferencing)
- VoIP applications (SIP, CAC)



a Moseley company.

Rev. 05/07/2009

# Axxcelera Broadband Wireless Product & Solutions Line Card

## **AXXCELERA BROADBAND**

Axxcelera Broadband Wireless is a data networking solutions company, developing technology to deploy networks for broadband wireless communications over the Internet from the "first leap" to the last mile.

Our ExcelMAX™ and AB-MAX™ fixed wireless broadband platforms bridge the last mile, with a point-to-multipoint solution that replaces the local loop for large corporate clients, small businesses, and other organizations.

Our AB-Full Access™ system allows first leap high-capacity, point-to-point wireless transmission, across terrain impediments, for customers who want to bypass wired networks or have no wired options. Distances may be, for example, 15, 20, or 30 miles.

Our ExcelFlex™ platform is a full featured microwave radio for the global telecommunications market. It consists of a Software Defined Indoor Unit™ (SDIDU™) and Outdoor Unit (ODU). The ExcelFlex™ radios include a state-of-the-art single chip modem ASIC, allowing a highly integrated IDU with flexible modulation for spectral efficiency and powerful Forward-Error-Correcting schemes.

## **AXXCELERA PRODUCTS**

Axxcelera's line of products include:

- **AB-Full Access II**
- **ExcelFlex**
- **AB-MAX Access Point**
- **AB-MAX CPE**
- **ExcelMAX Access Point**
- **ExcelMAX Full Duplex CPE**
- **ExcelMAX Half Duplex CPE**
- **ExcelMAX Indoor CPE**

## **REASONS TO BUY AXXCELERA PRODUCTS**

Axxcelera Broadband offers products that are engineered to be as flexible as possible while still being focused on specific wireless data networking needs. Our low cost, and easy to deploy architecture offers an excellent return on investment. This mature platform has been deployed in large data, voice and video networks and ensures a reliable operations in the field. Axxcelera provides a suite of management, installation provisioning and configuration tools, which make the installation and maintenance extremely simple.



a **Moseley** company.

82 Coromar Dr. Santa Barbara CA 93117 USA  
tel 805-968-9621 fax 805-685-9638  
e-mail: sales@axxcelera.com  
web site: www.axxcelera.com

Axxcelera Broadband Wireless is certified to the ISO 9001:2000 Quality Management System standard.

Axxcelera reserves the right to make changes to specifications of products described in this data sheet at any time without notice.

© 2009 Axxcelera Corp.